



PEORIA, ARIZONA

MEGATRON 43" INSTALLATION INSTRUCTIONS



INSTALL BASE GRAPHIC BEFORE MOUNTING

PLEASE TAKE YOUR TIME WITH THESE INSTALLATION INSTRUCTIONS AND PLEASE GET HELP WHEN HEAVY LIFTING IS REQUIRED. DURING ALL STEPS, PLEASE PROTECT THE MINI JUMBOTRON SO IT DOES NOT SCRATCH.

CEILING MOUNT INSTALLATION

The Megatron will weigh approximately 175 lbs when installed with 4 TVs. The ceiling mount provided by The Mini Jumbotron Company has a load capacity of 380 lbs. This does not mean your ceiling can support this much weight. Please consult a professional to determine if additional reinforcement is required to support the size and weight of your Megatron. Here are links to other mounting solutions as well as extension poles for use on taller ceilings:

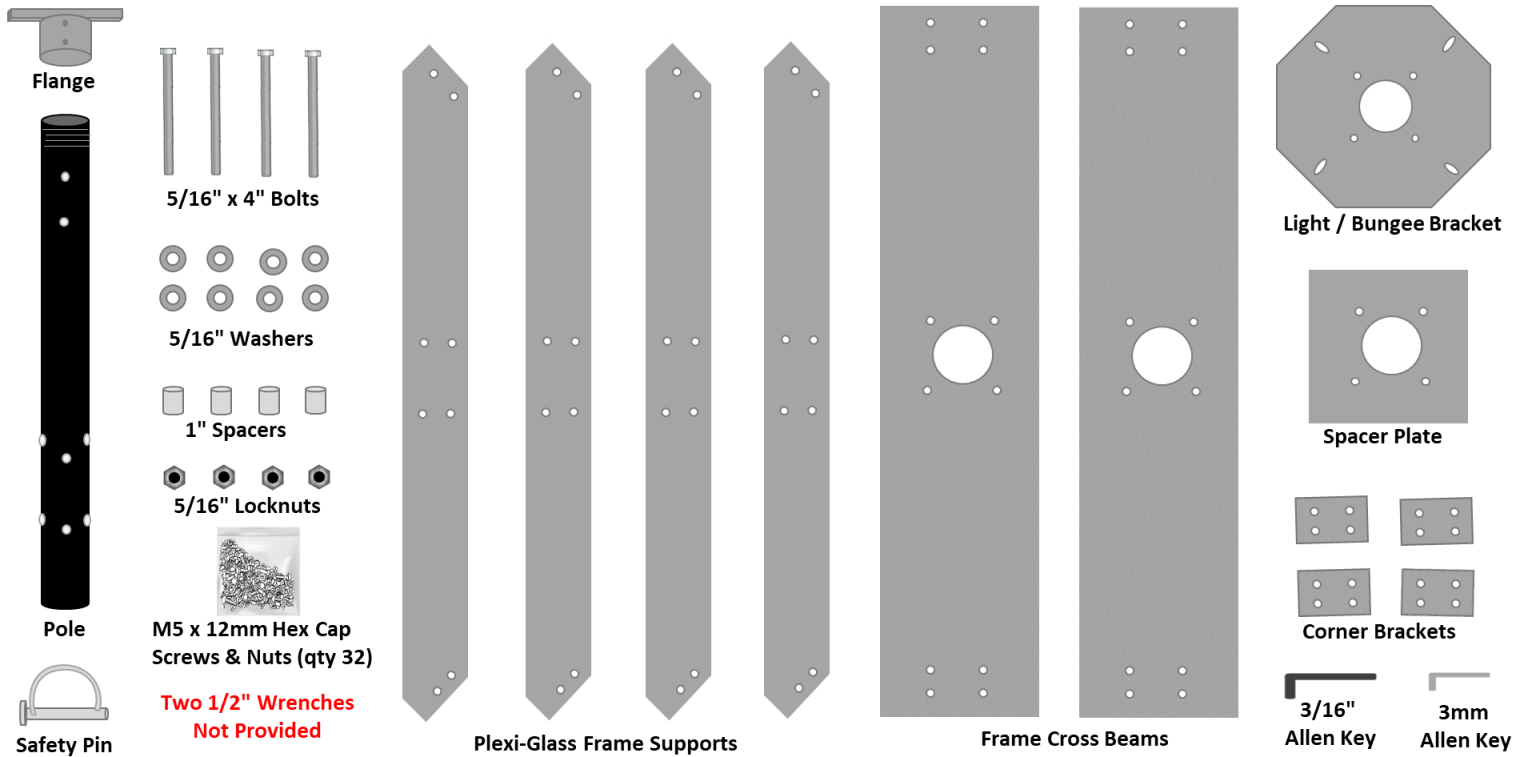
- [Adjustable Slanted Ceiling Mount for Sloped Ceilings](#)
- [Angled Ceiling Mount](#)
- [Chief CMS393 \(16"\) Dual Joist Ceiling Mount](#)
- [Chief CMS394 \(24"\) Dual Joist Ceiling Mount](#)
- [Extension Poles and Threaded Pole Connectors](#)

To install the provided ceiling mount, pre-drill four $15/64^{\text{th}}$ pilot holes in the pattern of the 4 round holes on the ceiling mounting plate. The lag screws provided are $3/8" \times 2 \frac{1}{2}"$ and require a $9/16"$ socket wrench. Firmly attach the plate to the ceiling, ensuring it can support the weight of your Megatron.

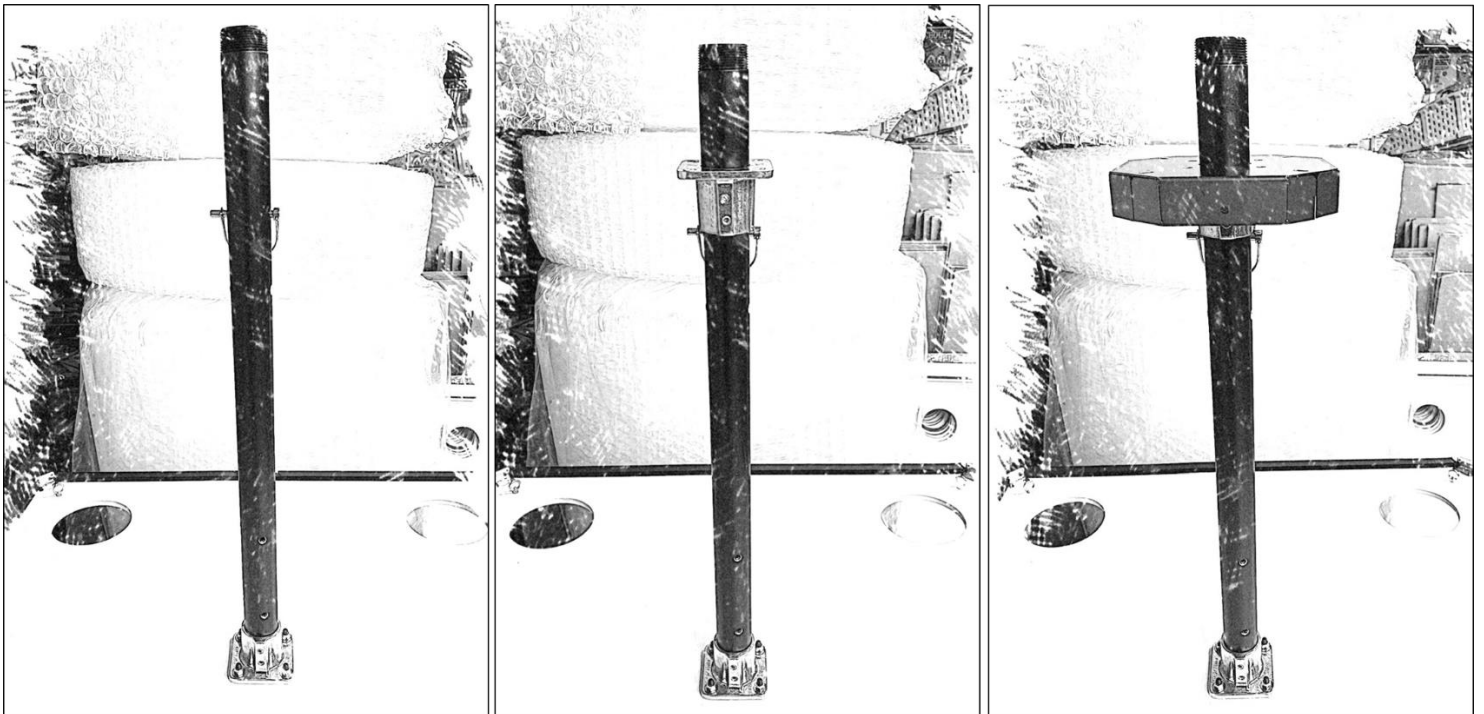


MEGATRON FRAME ASSEMBLY

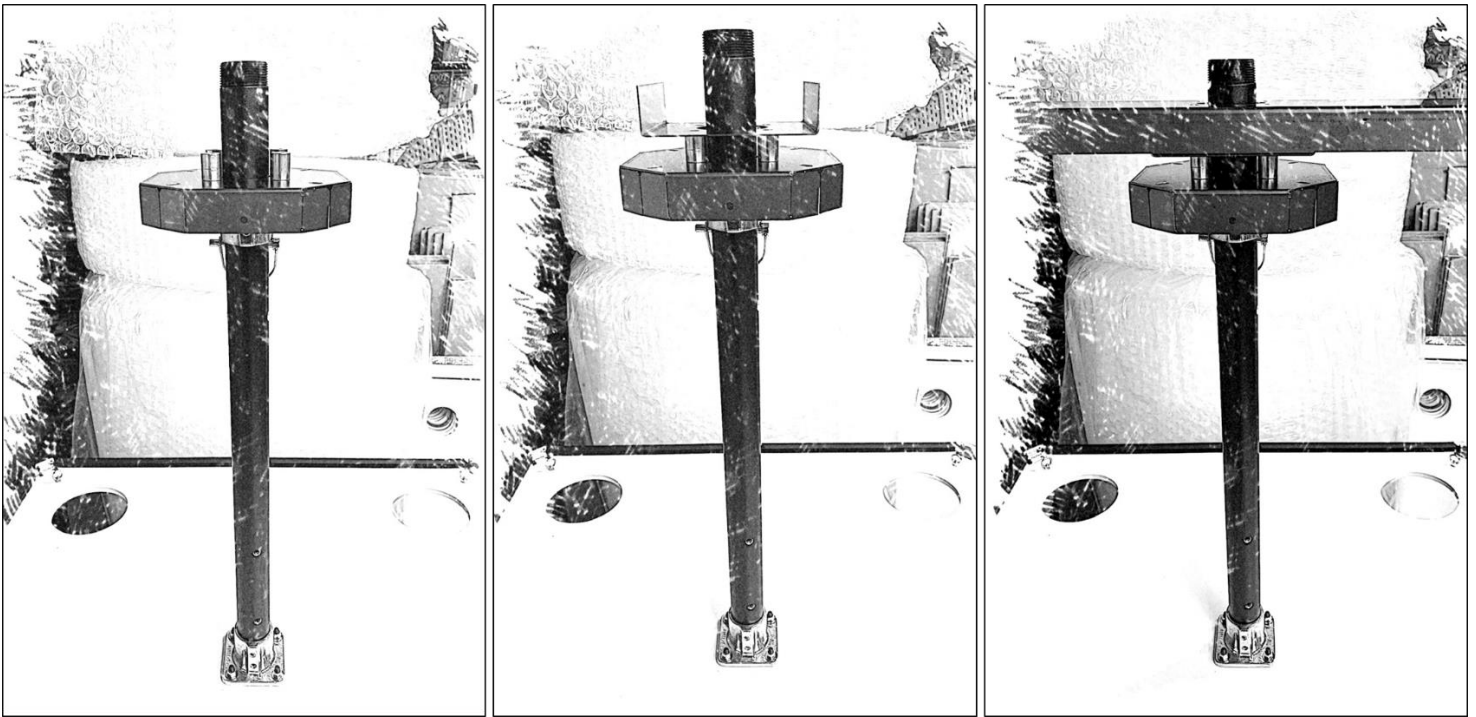
To avoid freight shipping charges, the Frame of the Megatron requires assembly. The parts & tools required are shown below:



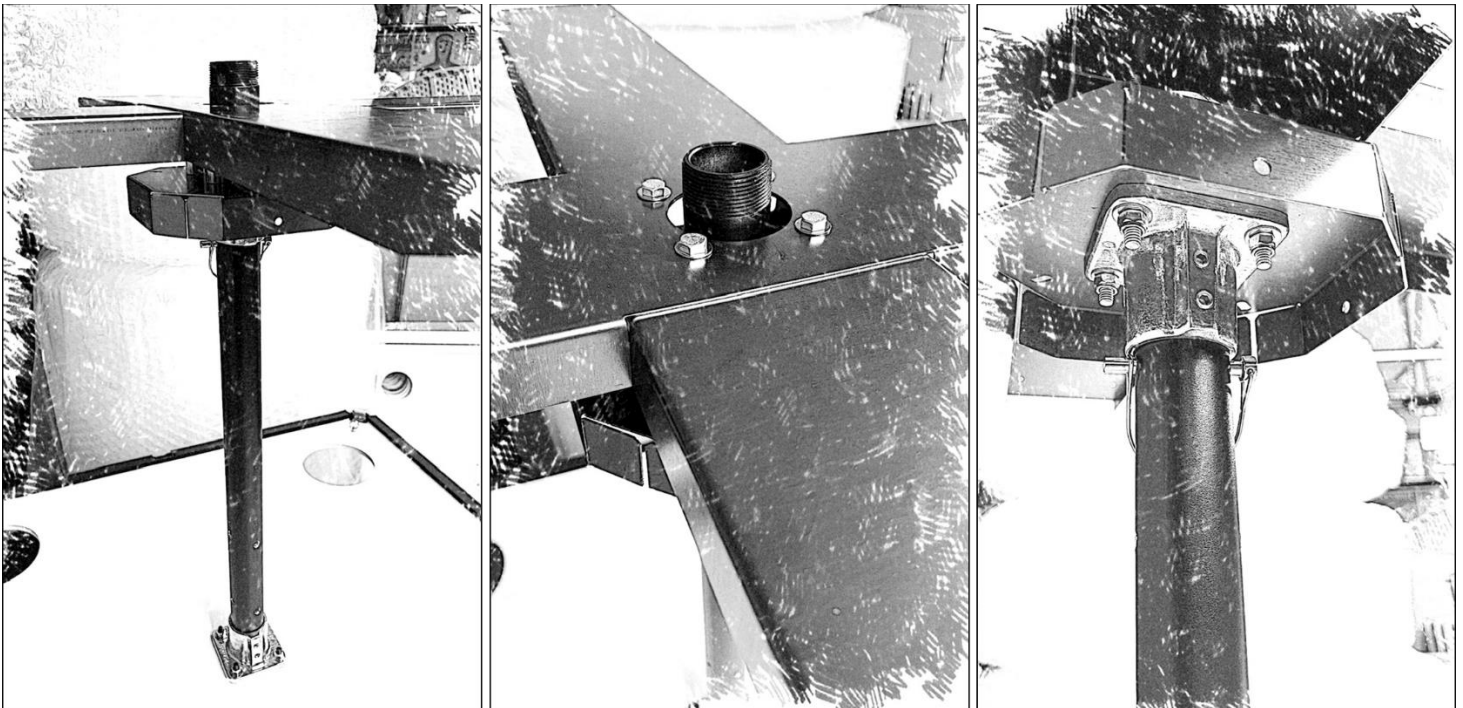
I have found it helpful to use the Megatron's Base and Pole when assembling the Frame. The following step by step pictures show the base and pole being used. Please complete each assembly step as described & shown.



Insert the non-threaded end of the Pole into the flange of the Megatron's Base. Tighten flange screws using a 3/16th allen key. Insert the safety pin through the hole closest to the pole threads. Add the other Flange as picture and tighten it so it is level and does not spin. Next place the Light / Bungee Bracket on top of the Flange.



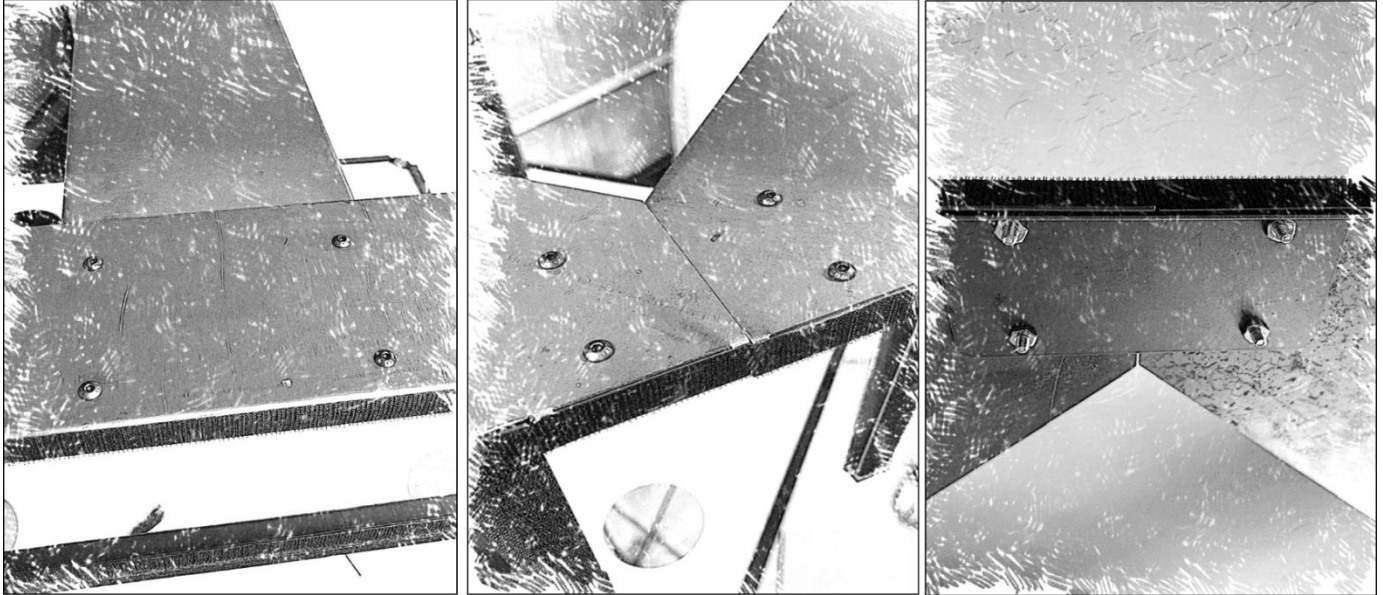
Line up the 4 holes of the Flange with the Light / Bungee Bracket. Next put the 1" spacers (4 total) over the 4 holes of the Light / Bungee Bracket. Now add the Spacer Plate as pictured above. Grab the Frame Cross Beam that does not have the cut out and place it over the Spacer Plate. Again, keep the holes lined up.



Place the other Frame Cross Beam over the top of the other beam so that they cross each other. Line up the 4 holes as best you can and insert the 5/16th bolts with washer through the holes. Be patient and do one bolt at a time. Once you get all 4 bolts through, go ahead and add the other washers and nuts. Tighten it down firm enough so the bolts don't spin but not so tight that the metal bends.

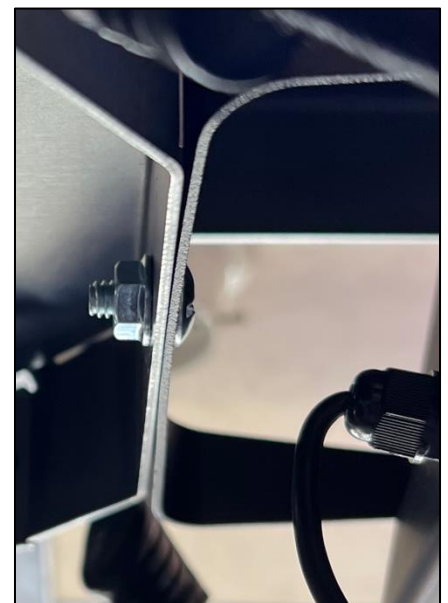
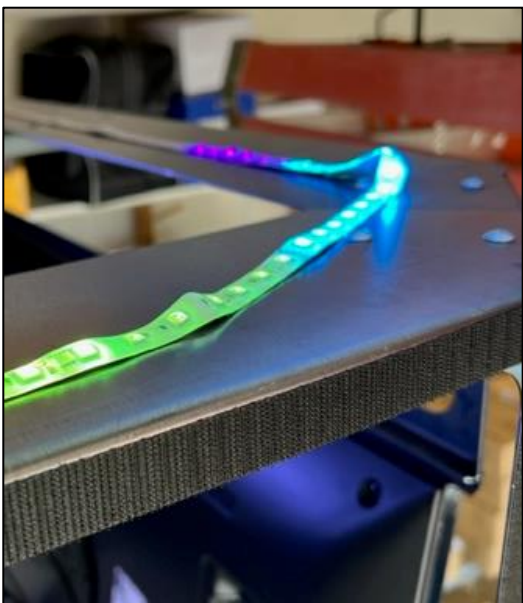
To avoid making the frame heavier, you may wait to attach the plexiglass frame support pieces until after the pole is attached to the ceiling mount. Loosen the Flange screws and lift off the partially completed Frame and set it aside. Also remove the safety pin. Free the Pole from the Base and then thread the Pole into the ceiling mount. Don't worry about the alignment of the pole holes, the TV mounts are fully adjustable. Thread the pole as tight as you can into the ceiling mount and insert the little screw provided with the ceiling mount into the side thread of the ceiling mount to help keep the pole from spinning.

With the pole now securely mounted to the ceiling, lift the partially completed Frame so that the pole goes through the Flange. Push the Frame up the Pole just high enough so that the Flange is past the lowest pole hole. Insert the safety pin through that pole hole to hold the Frame up while you evenly tighten the flange screws.

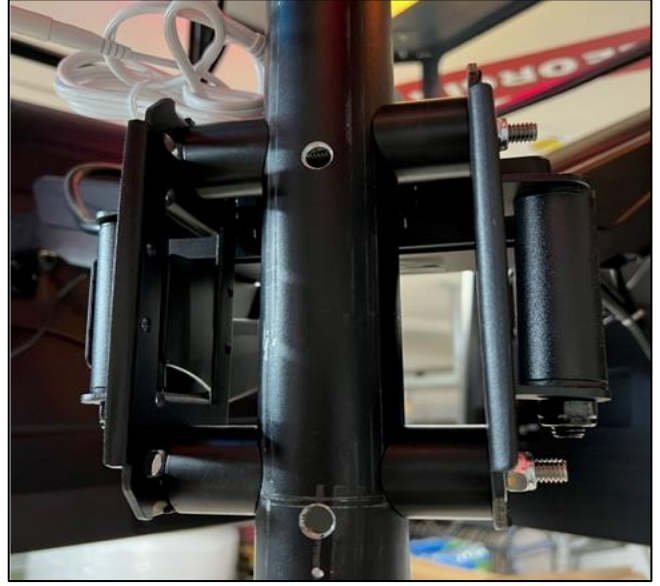


Now you're ready to complete the Frame. Attach the 4 Plexi-Glass Frame Supports to the cross beams. Insert 4 of the screws into each, with the nuts, but don't tighten them down just yet. Next, attach the Corner Brackets underneath the frame to hold the corners together. Once you have all 16 screws in the corners you may tighten all 32 screws & nuts using the 3mm Allen Key provided.

While the frame is in this low position, install the ceiling accent lighting and internal flood lights. The ceiling accent lights can be difficult to shape so just keep it about 2" back from the edge and no one will notice odd bends. Keep the plug near the center of the Jumbotron so the cord does not cast a shadow onto the graphics. Use the four 1/2" screws and nuts provided with your Govee flood lights to mount the flood lights to the Light / Bungee Bracket.



After installing the lighting, push the frame up as high as you can and install the safety pin under it in the highest hole.



Grab your 4 TV mounts and the Quad Mount Pole Hardware consisting of a 4 long bolts, 8 washers, 8 saddle spacers, and 4 nuts. You're going to attach two mounts to the pole using 2 bolts, 4 washers, 4 saddle spacers and 2 nuts. Then repeat the steps to firmly attach the other two mounts.

It'll be in this order: Bolt + Washer + Mount + Saddle Spacer + Pole + Saddle Spacer + Mount + Washer + Nut

After attaching your TV mounts to the pole, attach your TVs using the hardware and instructions provided with the mounts. Remove the protective plastic coating from the TVs.

Pull the mounts and TVs out as far away from the pole as possible. You don't want the TVs in the way during the base install. While you have access to the bottom of the Megatron, Plug in all electrical, test it and neatly organize all cabling. Make sure all electrical is out of the way and won't interfere with the base install. Remove the protective plastic coating from the TVs.



Attach the bungee cords to the top corners of your Light / Bungee Bracket. Make sure you have a helper as you lift up the base up and center the base flange onto the pole. Attach the bungee cords to the corner eye pads of the base and evenly tighten the flange screws to securely level and attach the base onto to the pole.

Now you may adjust your TVs so that the TV sensors line up with the foam seal on the base. The sensors should fit inside of the sensor cutouts on the foam seal. Also, angle your TVs so they line up under the seal on the frame. That is, angle each TV so that it appears they will make contact with the seal on the bottom of the frame once you lower the frame. **BE SURE THAT THE TOP OF THE FRAME, ABOVE THE TV REMAINS STRAIGHT UP AND DOWN.** If you need to adjust the TV mounts please use the instructions that came with the TV mounts. Once it appears you have the TVs in the right position, tighten down the TV mounting angle.

Ask a friend or two to help you remove the safety pin, loosen the flange screws and lower the frame so that the seal on the bottom of the frame rests level on top of all 4 TVs. Make sure the front of the frame remains straight up and down. Essentially, you want to sandwich the TVs between the frame and the base so that there are no gaps above or below the TVs. Evenly tighten the flange screws ensuring that the frame remains level. **If the safety pin cannot be reinserted don't worry about it as it is no longer needed.**



Remove any remaining protective plastic from TVs.

Install the provided rubber seal and hook/hard Velcro to the sides of your TVs. This will aid in holding the plexi-glass in place and creates a seal to block out light. Take your time. If you need to order more seal you can do so [here](#).

Apply pressure to the seal on the side of the TVs and give the adhesive 15 minutes to adhere before applying the Velcro. Then apply the Velcro and give the Velcro time to adhere as well.

You may now attach your plexi-glass panels. Insert the bottom of the plexiglass into the corner slot on the base and then press the plexi-glass against the Velcro on the TV sides and on the frame. Be sure that the plexi-glass above the TVs and on the corners are at the same height on top. Adjust as necessary.



CONNECT TO CONTROL YOUR LED LIGHTING

NOTE: 5GHz Wi-Fi is not supported

STEP 1: Download the Govee Home app from Apple App Store or Google Play

STEP 2: Log in with your account (new users need to create an account.

STEP 3: Turn on Bluetooth on your phone

STEP 4: Open the Govee Home App, tap the “+” icon in the top right corner

STEP 5: Search for the following and follow the on-screen instruction to complete pairing:

- “H619C” – Ceiling Accent Lights
- “H7060” – Internal Flood Lights
- “H601A” – Recessed Lighting



VOICE CONTROL

These devices support voice control via Alexa and Google Assistant. The User Guide can be found in the right hand corner of the device page under “Settings” icon

INSTALLATION IS COMPLETE

Please send pics and videos of your Mini Jumbotron 623-606-6176 and please continue to share as many pics and videos throughout the years as you want. I love posting them on social media and they really help our company. Thank you & enjoy!



PEORIA, ARIZONA

If you have any questions, please contact us.

www.Minijumbotron.com